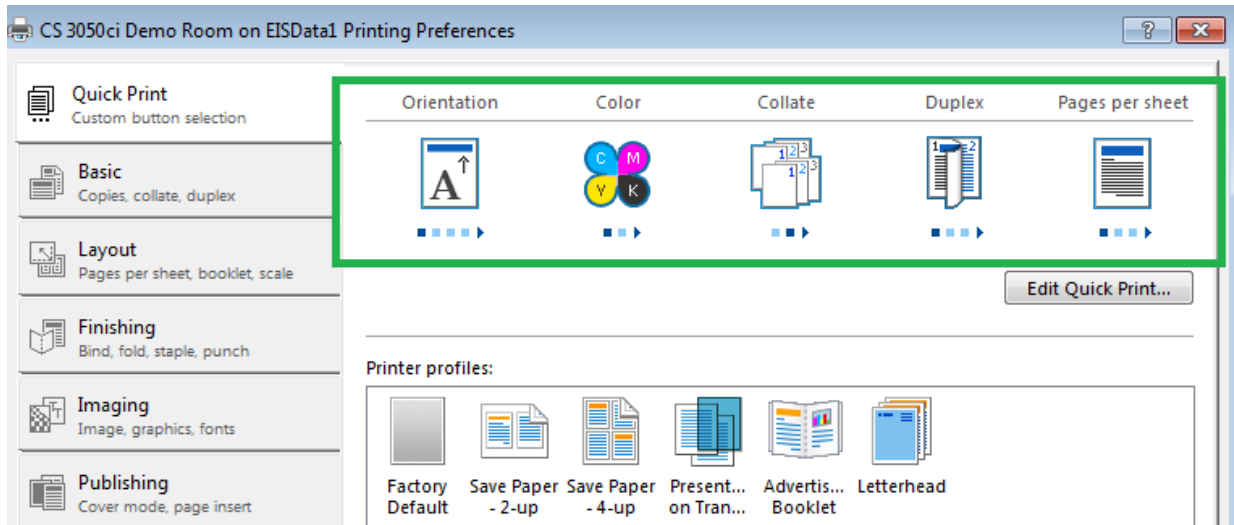


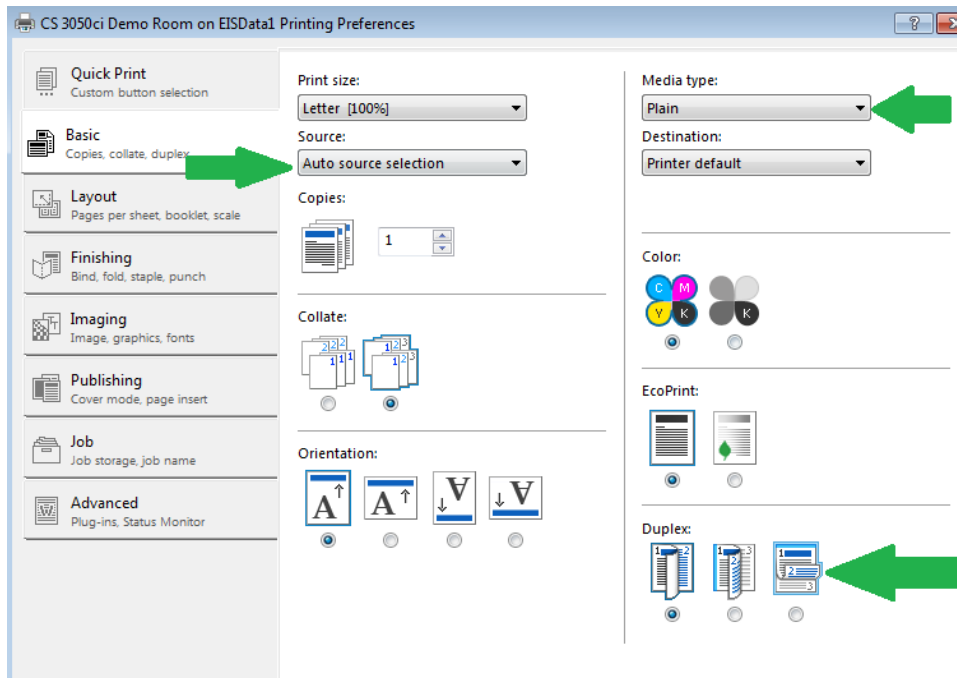
## KX Print Driver

In most applications you can select Properties or Preferences to change settings in your print driver for a particular job. Since the Copystar print driver has universal interface some of these options may or may not be applicable for your particular machine.

**Quick Print-** This feature allows for a quick one click source for common used features in print driver. Quick Print is the first tab you will see in properties.

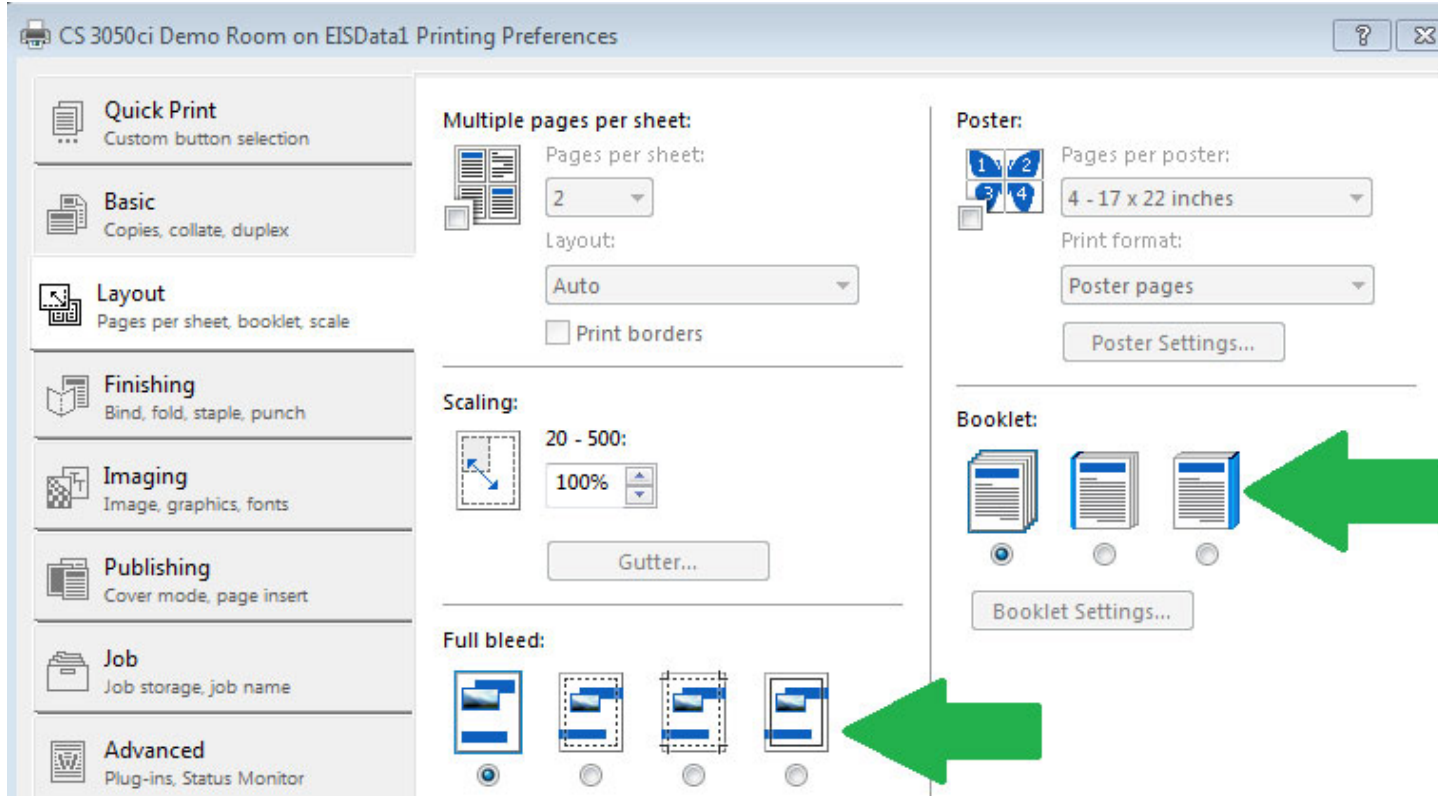


**Basic Tab-** Allow selection of different paper trays and paper types. \*\*Remember when switching drawers to make sure to always select the paper type. By default all machines use a setting of Plain. If the Unspecified type is selected and the paper drawer being used is emptied during the print job the machine will switch to another drawer of different media type. By default when changing paper drawers the default setting on the print driver is Unspecified.\*\*

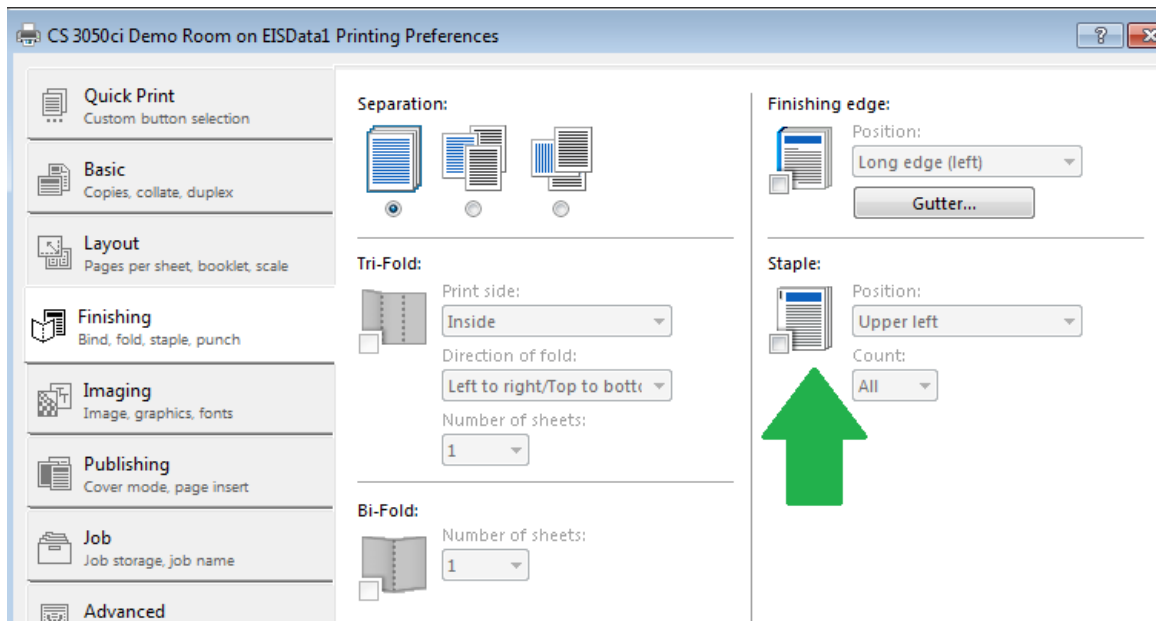


You can also in the Basic tab select to do Two Sided and with color MFP's select the color type. (Black and White or Color)

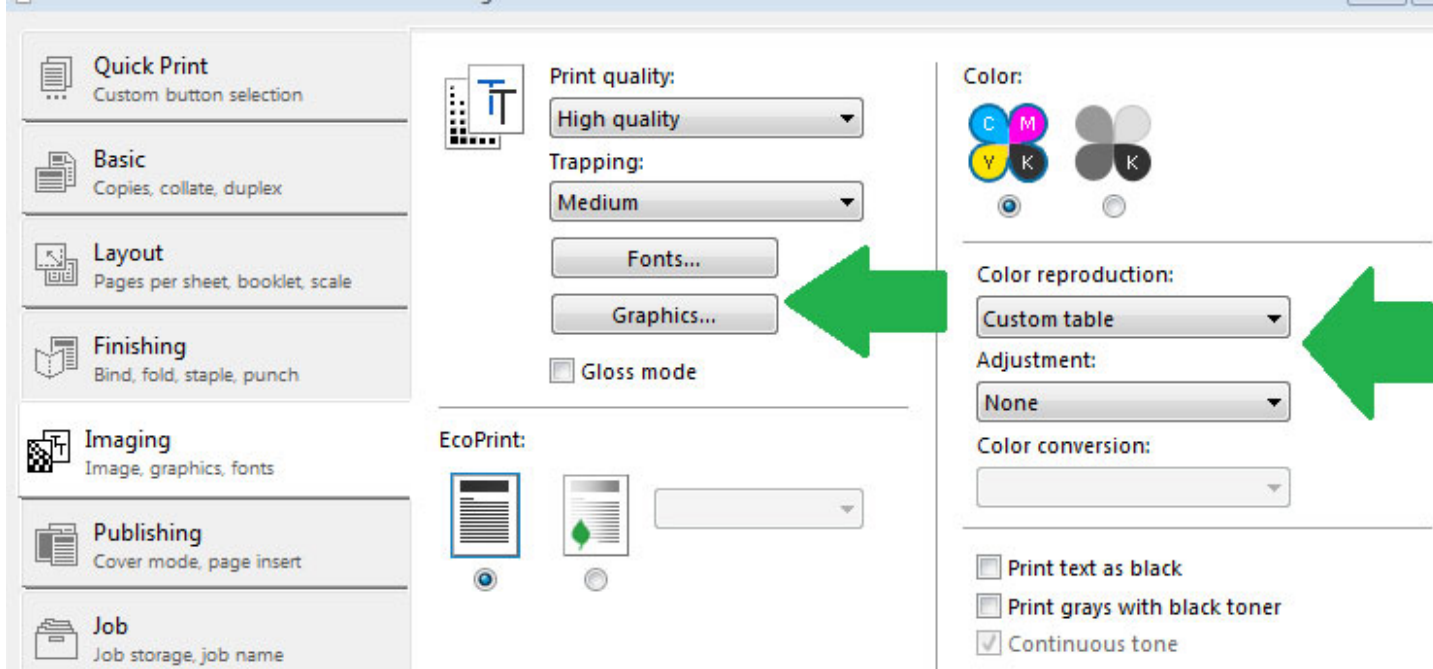
**Layout Tab-** Allows you to change the layout of your document of how it will appear when printed. Full Bleed option can be found in this tab for 12x18 printing. Also if your machine has booklet folder you can set the options in the tab.



**Finishing Tab-** Allows to change to staple or punch a document. This is typically used with a Document Finisher.



**Imaging Tab-Color machines only-** Make adjustments to color quality and reproduction.



**Quick Print**  
Custom button selection

**Basic**  
Copies, collate, duplex

**Layout**  
Pages per sheet, booklet, scale

**Finishing**  
Bind, fold, staple, punch

**Imaging**  
Image, graphics, fonts

**Publishing**  
Cover mode, page insert

**Job**  
Job storage, job name

**Print quality:**  
High quality

**Trapping:**  
Medium

Fonts...

Graphics...

Gloss mode

**EcoPrint:**

**Color:**

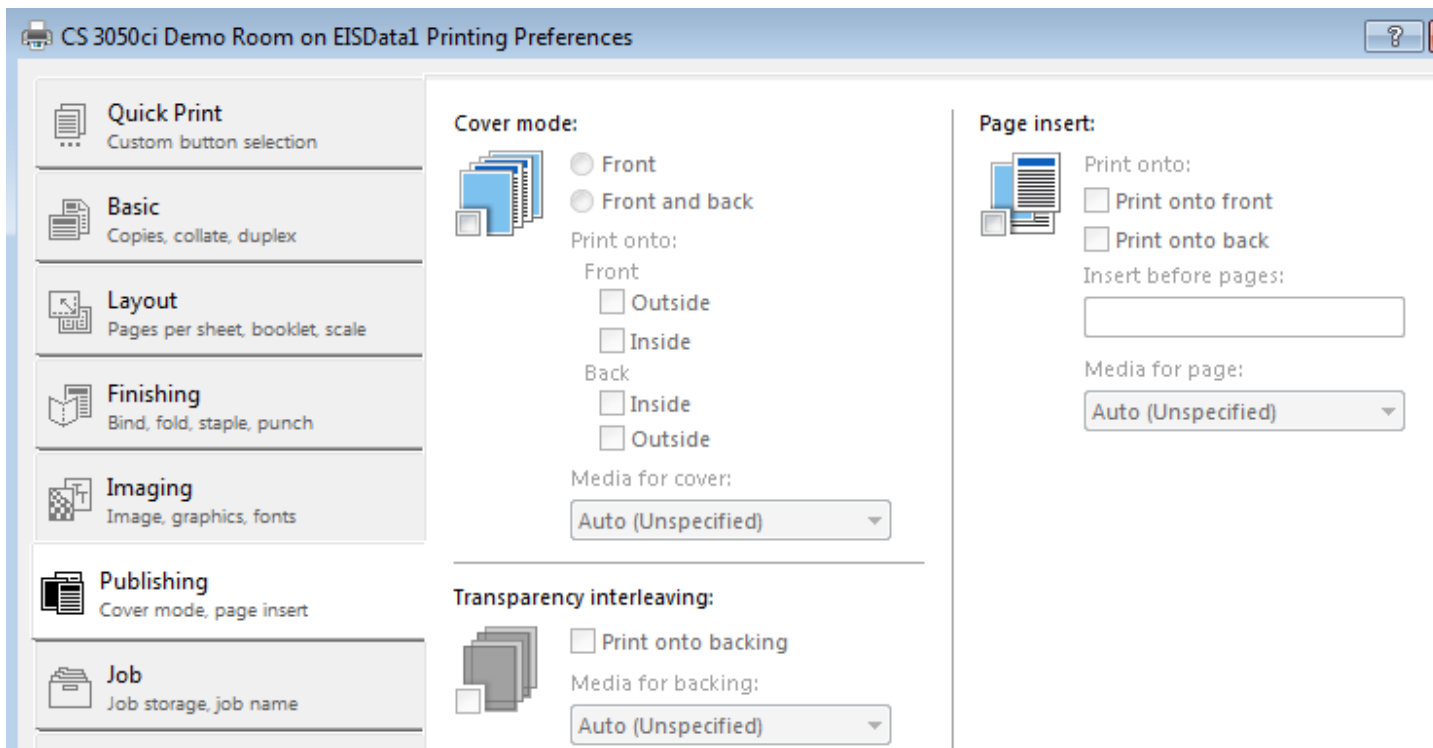
Color reproduction:  
Custom table

Adjustment:  
None

Color conversion:

Print text as black  
 Print grays with black toner  
 Continuous tone

**Publishing Tab-** Allow to use a Cover Page or use a Page insert.



CS 3050ci Demo Room on EISData1 Printing Preferences

**Quick Print**  
Custom button selection

**Basic**  
Copies, collate, duplex

**Layout**  
Pages per sheet, booklet, scale

**Finishing**  
Bind, fold, staple, punch

**Imaging**  
Image, graphics, fonts

**Publishing**  
Cover mode, page insert

**Job**  
Job storage, job name

**Cover mode:**

Front  
 Front and back

**Print onto:**

Front  
 Outside  
 Inside

Back  
 Inside  
 Outside

Media for cover:  
Auto (Unspecified)

**Transparency interleaving:**

Print onto backing

Media for backing:  
Auto (Unspecified)

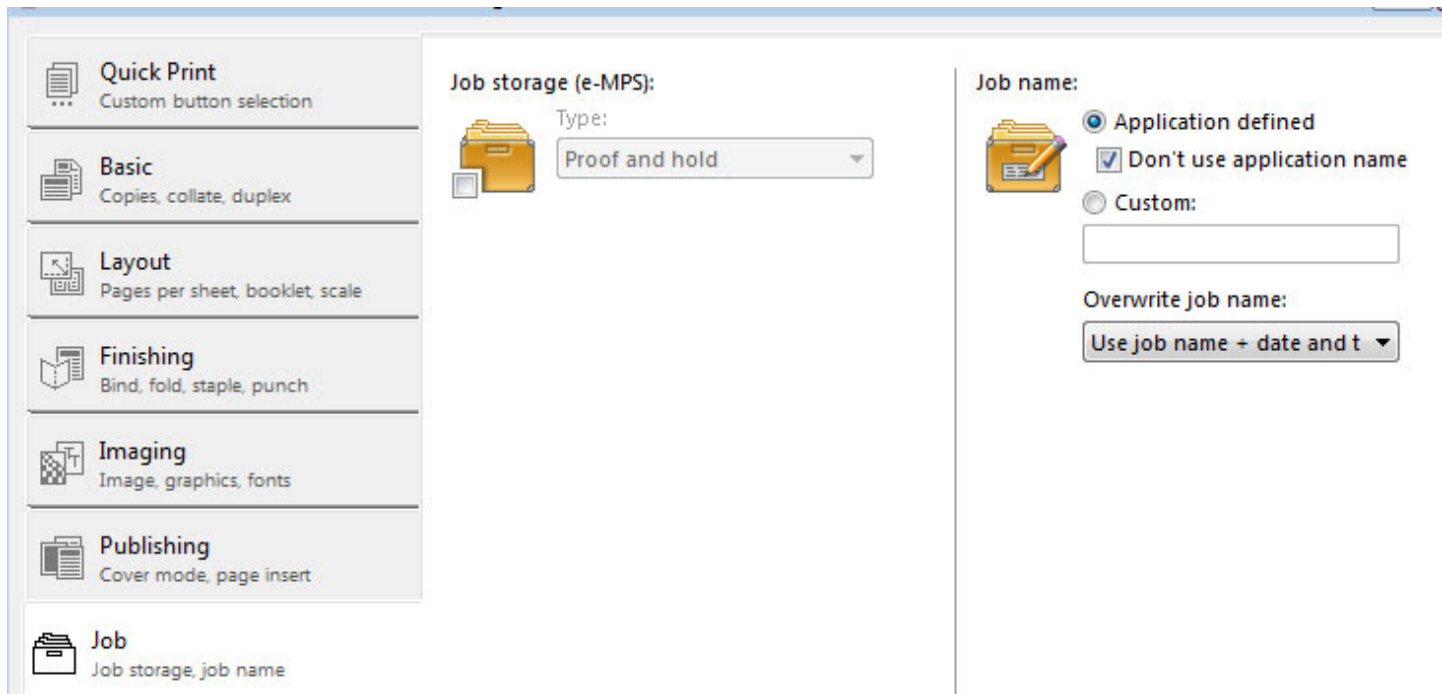
**Page insert:**

Print onto:  
 Print onto front  
 Print onto back

Insert before pages:  
[ ]

Media for page:  
Auto (Unspecified)

**Job Tab-** Allows printing to copier hard drive for a private print or stored on a document box. This can also be password protected.



The screenshot displays the 'Job Tab' settings in the ELITE software. On the left, a vertical sidebar contains several menu items: 'Quick Print' (Custom button selection), 'Basic' (Copies, collate, duplex), 'Layout' (Pages per sheet, booklet, scale), 'Finishing' (Bind, fold, staple, punch), 'Imaging' (Image, graphics, fonts), 'Publishing' (Cover mode, page insert), and 'Job' (Job storage, job name). The 'Job' tab is currently selected. The main area is divided into three sections: 'Job storage (e-MPS):' with a folder icon and a 'Type:' dropdown menu set to 'Proof and hold'; 'Job name:' with radio buttons for 'Application defined' (selected), 'Don't use application name' (checked), and 'Custom:' (with an empty text box); and 'Overwrite job name:' with a dropdown menu set to 'Use job name + date and t'.