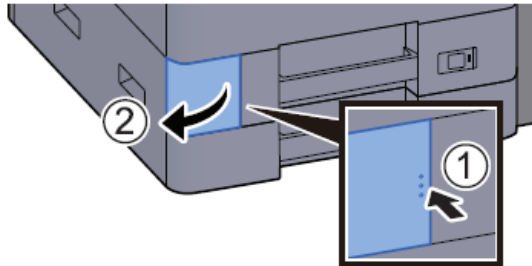


Replace the Waste Toner Box

When the waste toner box is full, the following message will be displayed. Immediately replace the waste toner box.

"Waste toner box is full."

Open the waste toner box cover.

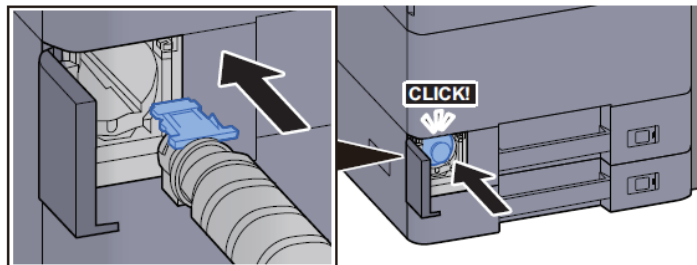


Remove the Waste Toner Box.



If you current Black Toner is near empty, you can remove that bottle and use as Waste Toner bottle.

Install the Waste Toner Box.



Close the waste toner box cover.

