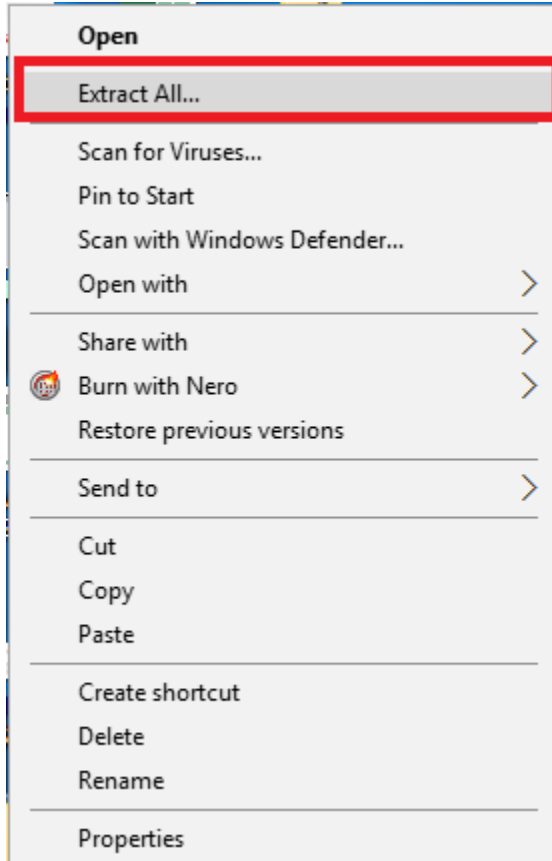



Installing Window KX Driver 7.x

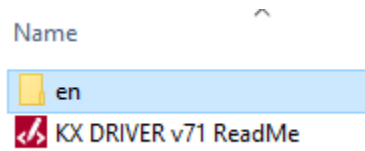
- Download the print driver from the Elite Imaging Systems Website under Downloads.
- Once downloaded, Right click the zip file and select Extract All



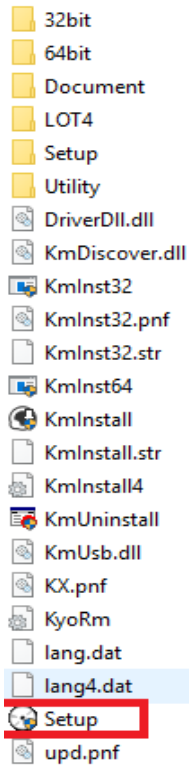
- Go through the Windows wizard to unzip a file.
- Once complete you should have a regular file folder
- Open the folder

 Kxv710330_UPD_signed

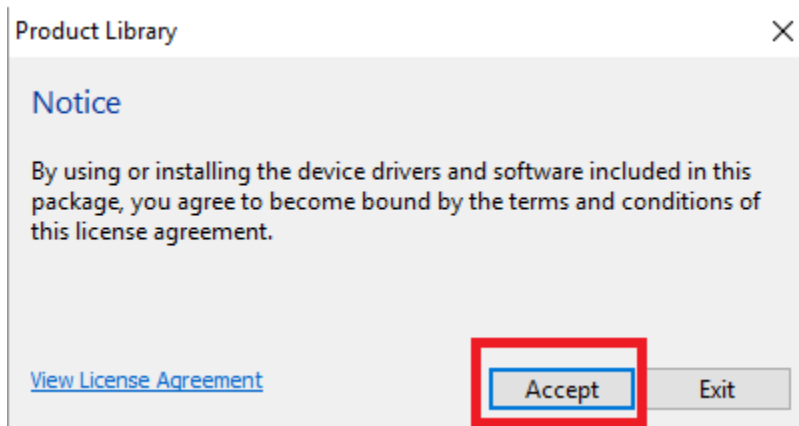
Click the en folder



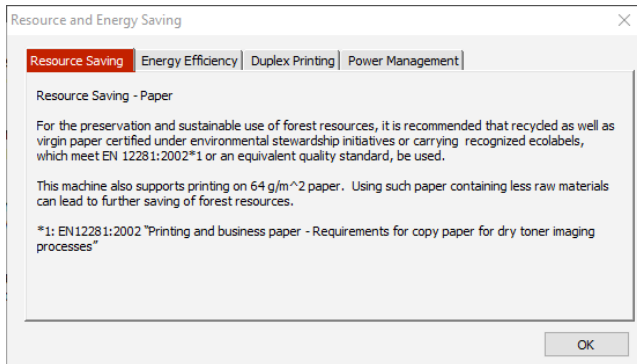
➤ In the list of files and folders look for Setup



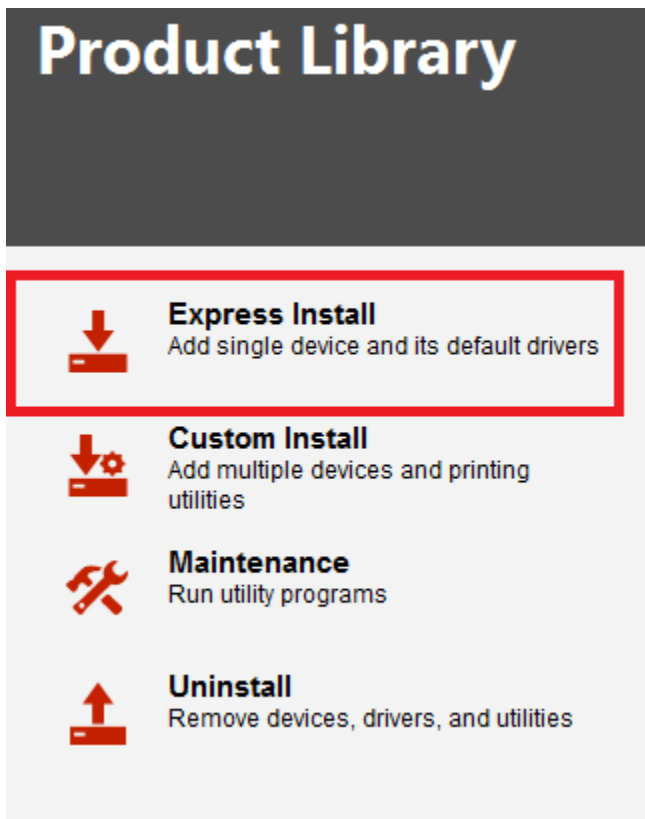
- Double Click and run Setup.
- Accept the License Agreement



- Click OK to bypass the Energy Saving notices



- Click Express Install from the menu



- Find your device from the list and click to highlight, Note: it's best not to select devices with letters and numbers (IPV6) in the details column and best to select devices with just numbers in the detail column. (IPV4)

| Device | Details |
|----------------|--------------------------|
| CS 7052ci | fe80::217:c8ff:fe4a:b49c |
| CS 406ci | fe80::217:c8ff:fe25:d3f |
| ECOSYS M2635dw | fe80::217:c8ff:fe1c:d1e2 |
| CS 7052ci | 10.0.0.235 |
| CS 3051ci | 10.0.0.53 |
| CS 406ci | 10.0.0.164 |
| CS 4550ci | 10.0.0.165 |

- Make sure you have a checkmark for each item in the bottom list.

Select the features you want to use with this device.

| Name | Description |
|--|--|
| <input checked="" type="checkbox"/> KX DRIVER | (Recommended) Extended-functionality printing |
| <input checked="" type="checkbox"/> FONTS | Screen fonts that match the printer's fonts |
| <input checked="" type="checkbox"/> Status Monitor 5 | Advanced service for monitoring current printer status |

- Press Install to install the device



Click Yes or No if you wish to participate with Kyocera Data Collection

Data Collection



We ask you to help improve our application and/or products by providing usage information. Regarding data collection, please read the PRIVACY POLICY as follows.

PRIVACY POLICY

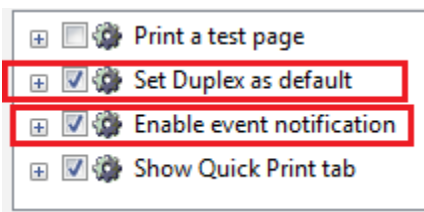
This application uses Google Analytics, an analytical service provided by Google Inc., to gather and help analyze information on how users use this application and/or network printers. This information helps us improve the quality of this application and/or the products.

The application does not collect any personal data.

- Yes, I want to help improve this software
- No, I do not wish to take part in this feature

OK

- Once installation is complete you will come to a confirmation of what was done.
- In the bottom section you may want to deselect the checkmark for Set Duplex as default. If you do not uncheck that then every document you print will be 2 sided.
- Deselect Enable event notification-This will pop an alert every time you print.



- Click Finish to close the window.
- Print Driver installation is complete.

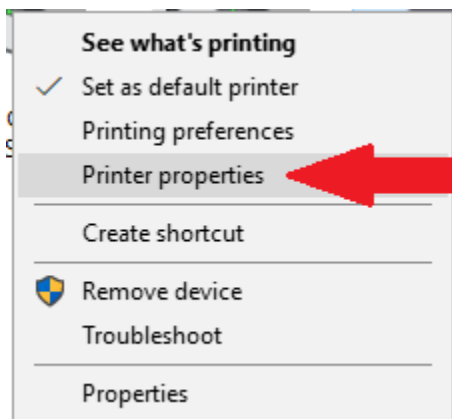
Setting Job Accounting for KX Driver

- Go to Control Panel
- Select Devices and Printers
- Right Click your device

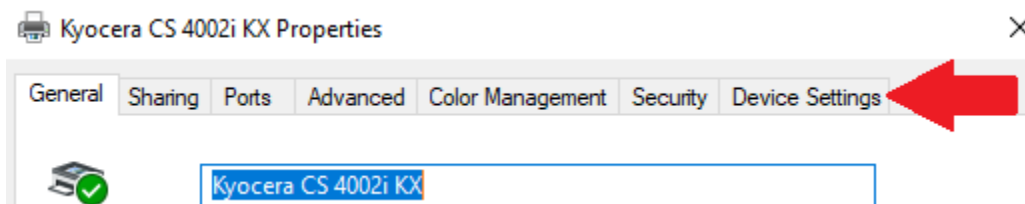


Kyocera CS 4002i
KX

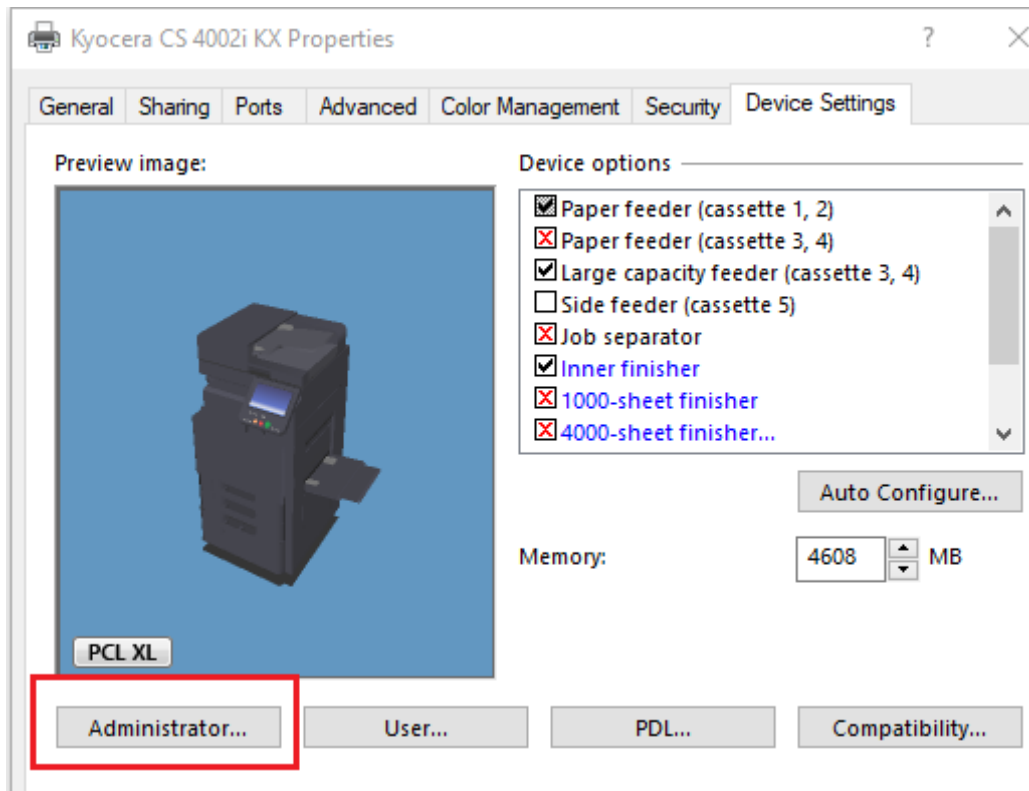
- Select Printer Properties



- In the top Tabs click Device Settings on the far right.

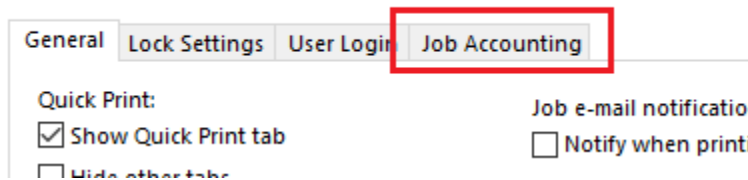


- Click Administrator button



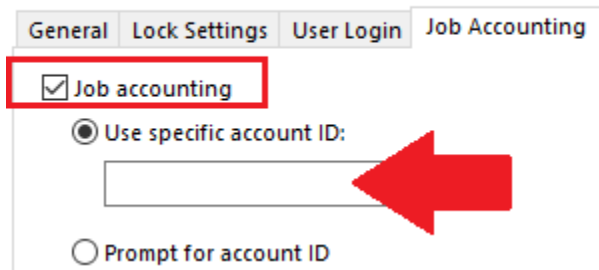
- Click Job Accounting Tab

Administrator Settings

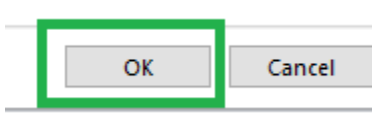


- Place a checkmark in the Job Accounting Box. Best Practice is to enter your code you use in the Use specified Account ID box

Administrator Settings



- Click OK to save.



- Click OK again to Close out Properties Window.

