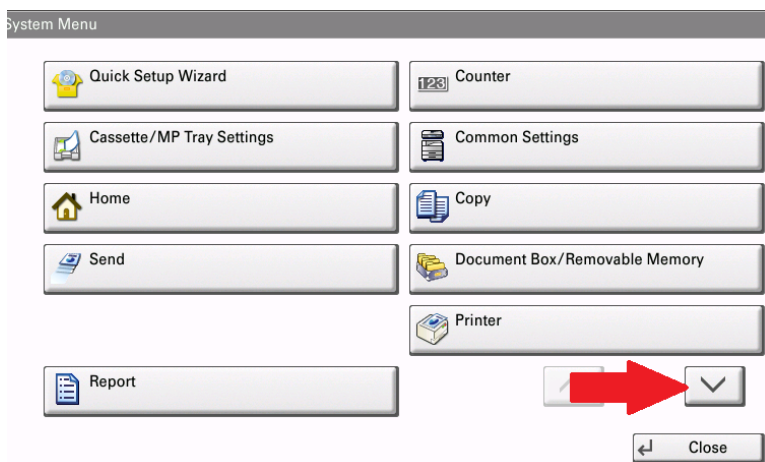


## Changing Address Book or One Touch Keys from Operation Panel

Press System Menu/Counter



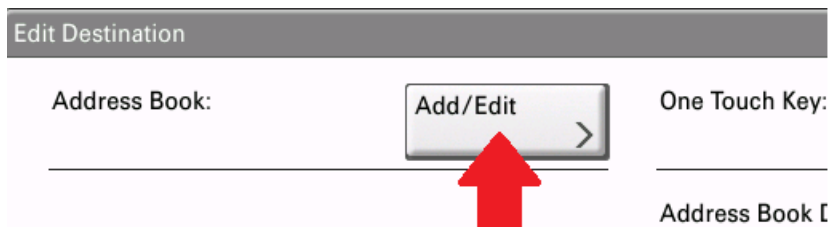
Press Down Arrow



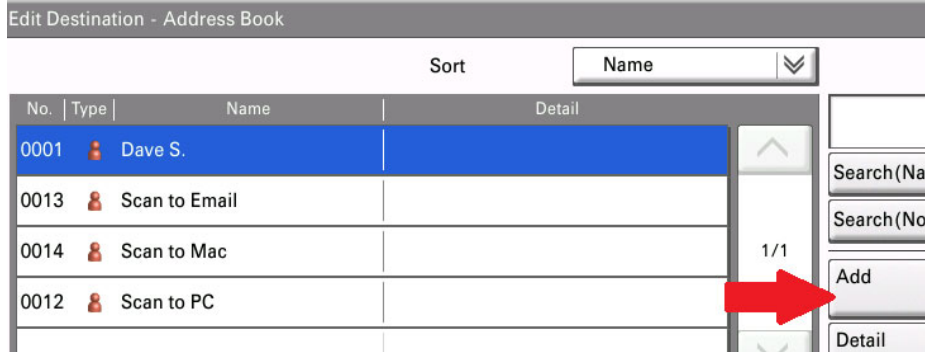
Press Edit Destination



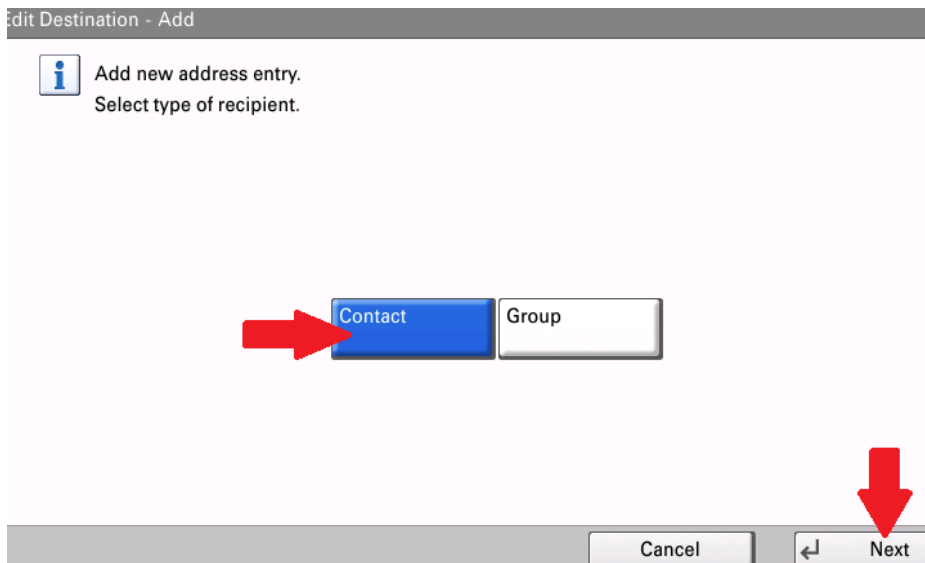
To change an Entry in the Address Book Press Add/Edit



Press Add to add a new entry.



Press Contact and press Next



Press Change to enter a display name and then press any of the destinations that need to be configured. Press Save when finished.

